





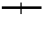




Legend

-  Altalink Bullshead 523S Substation
-  Enerfin Holsom 1054S Substation
-  Consultation Corridor on Township Road 120
-  Initial route Proposed in Enerfin July 2021 Facility Application
-  Alternate route section on RR 80 in road allowance (East side)
-  Alternate route section on RR 83 in road allowance (East side)
-  Heavy Rail
-  TWP
-  QTR

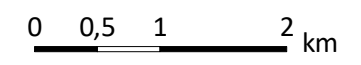


Map: Winnifred Wind Power Connection Project - Newsletter Update

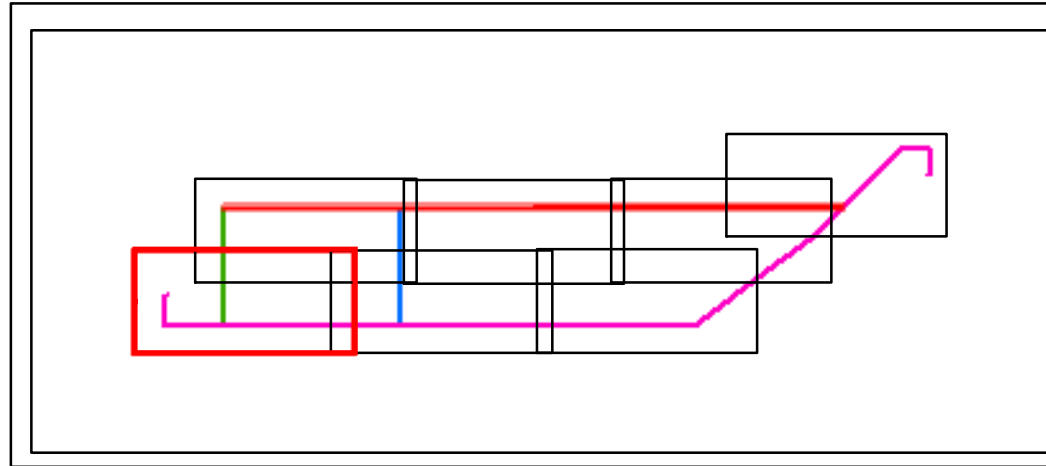
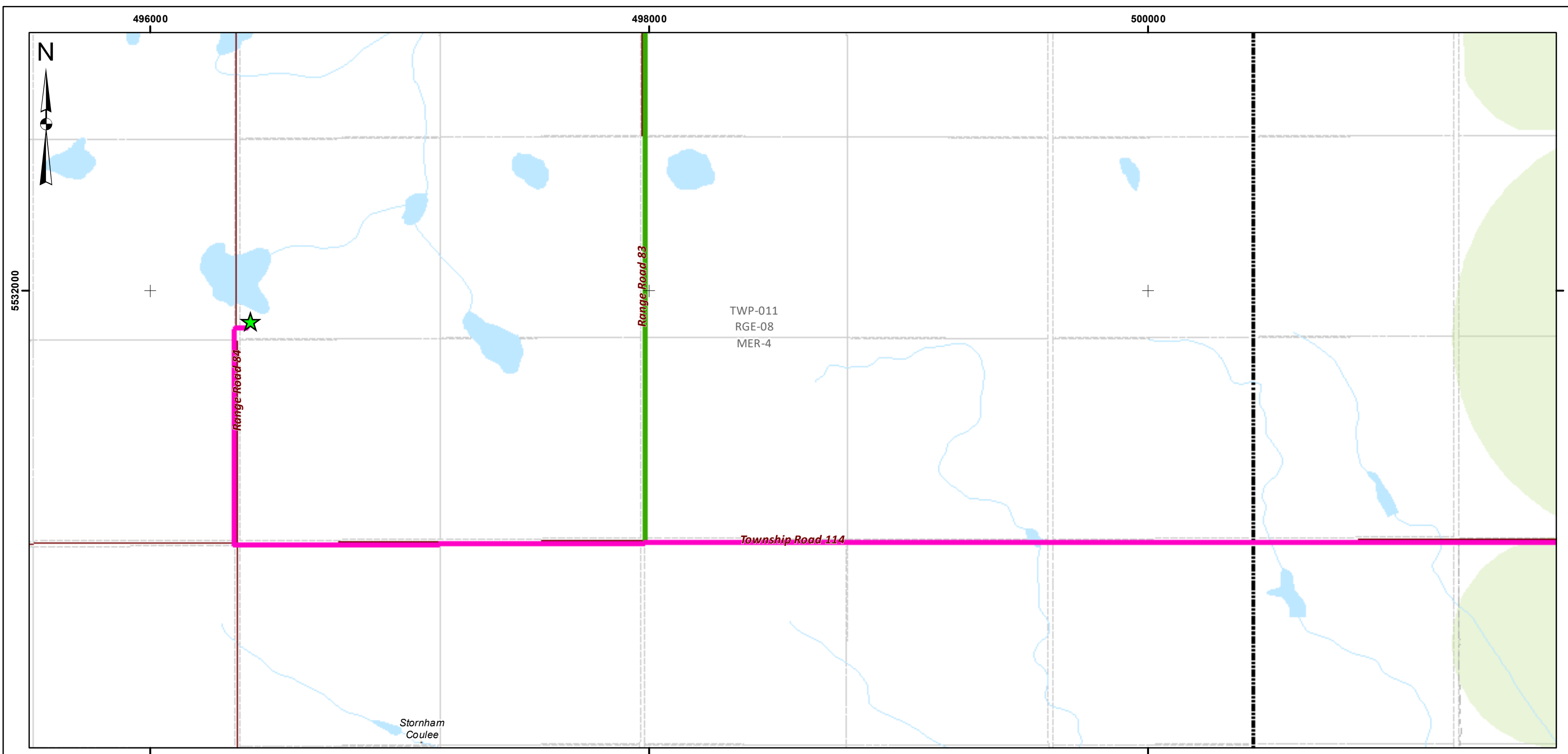
Date: March 2022

Page: 1/1 Scale:

1:60.000



(WGS_1984_UTM_Zone_12N)



Legend

- Altalink Bullshead 523S Substation
- Enerfin Holsom 1054S Substation
- Consultation Corridor on Township Road 120
- Initial Proposed route - in road allowance RR 84 and TWP 114
- Alternate route section on Range Road 80 in road allowance
- Alternate route section on Range Road 83 in road allowance
- Heavy Rail
- QTR
- TWP



Map: Winnifred Wind Power Connection Project - Newsletter Update

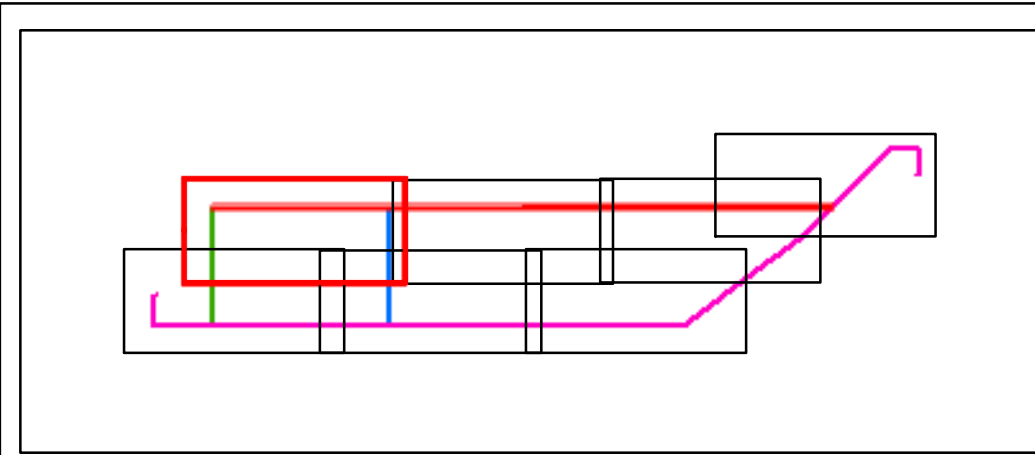
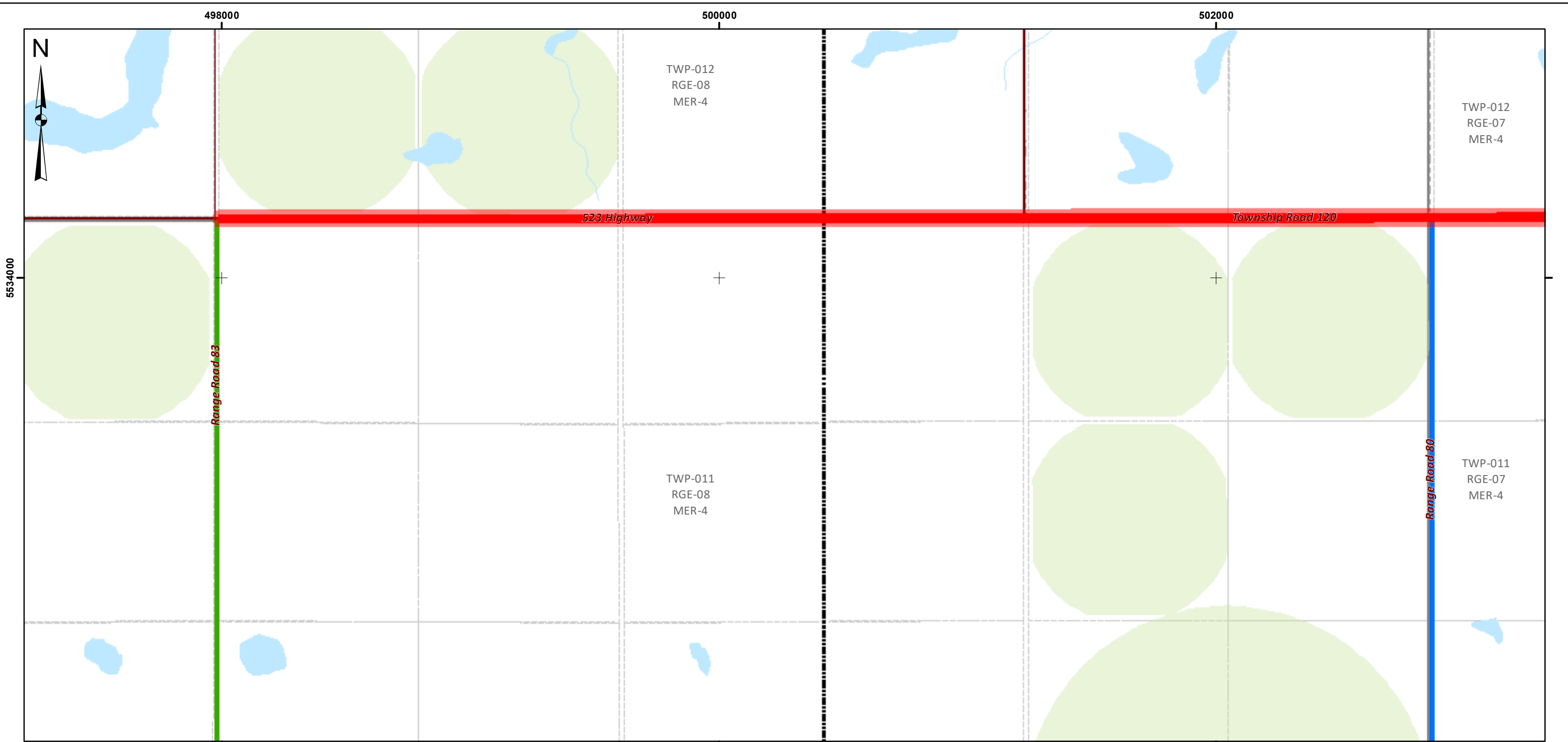
Date: March 2022

Page: 1 / 7

Scale: 1:15,000



(WGS_1984_UTM_Zone_12N)



Legend

- Altalink Bullshead 523S Substation
- Enerfin Holsom 1054S Substation
- Consultation Corridor on Township Road 120
- Initial route Proposed in Enerfin July 2021 Facility Application
- Alternate route section on Range Road 80 in road allowance
- Alternate route section on Range Road 83 in road allowance
- Heavy Rail
- QTR
- TWP



Map: Winnifred Wind Power Connection Project - Newsletter Update

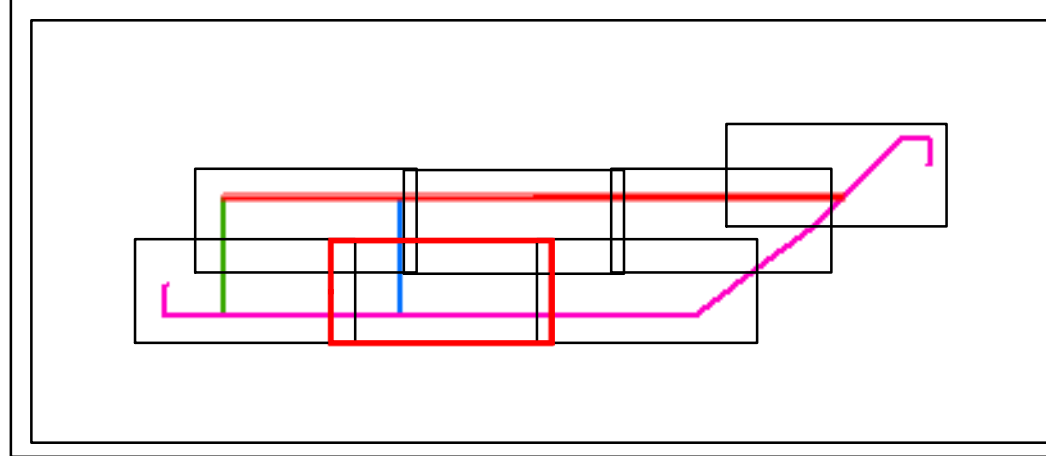
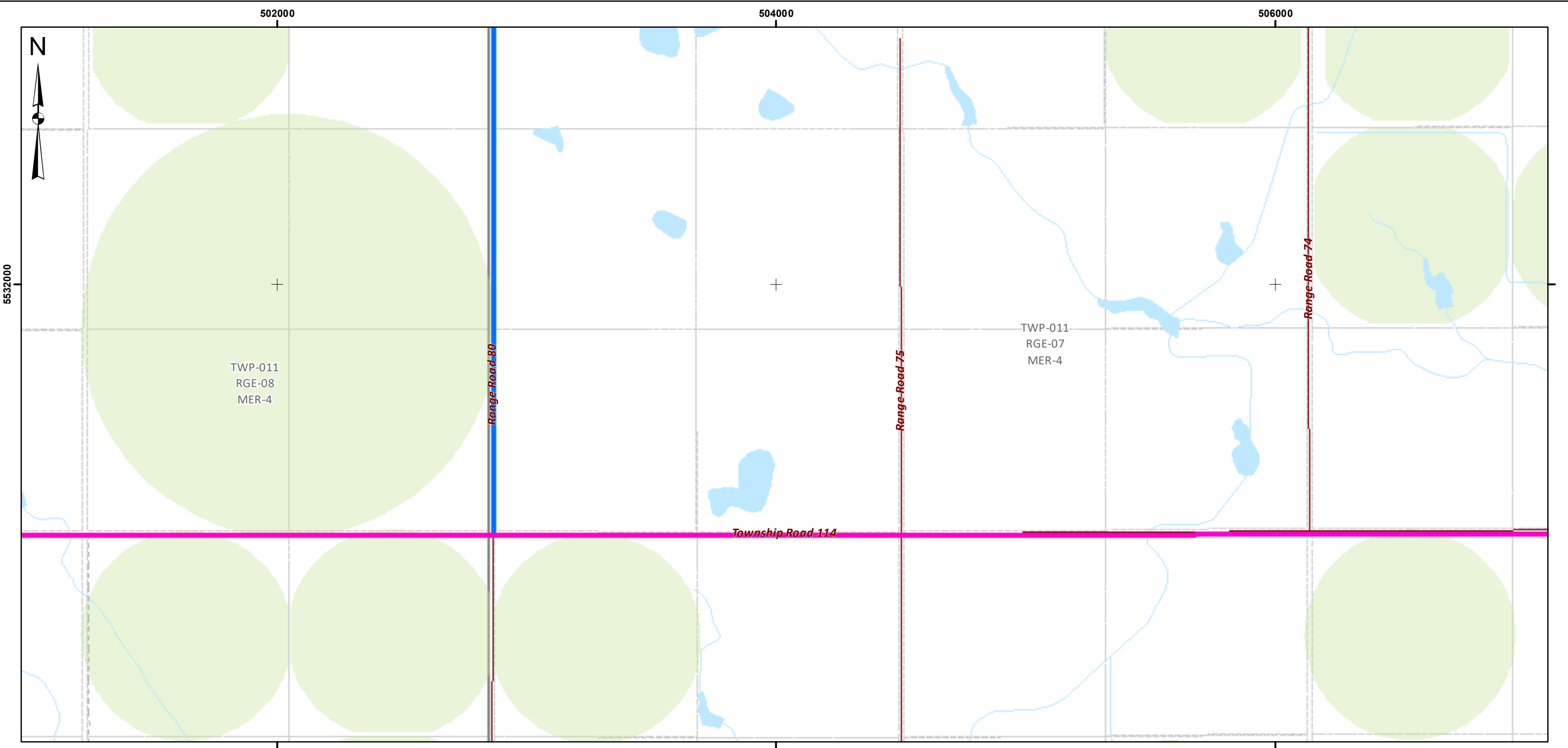
Date: March 2022

Page: 2 / 7

Scale: 1:15.000



(WGS_1984_UTM_Zone_12N)



Legend

- ★ Altalink Bullshead 523S Substation
- ★ Enerfin Holsom 1054S Substation
- Consultation Corridor on Township Road 120
- Initial Proposed route - in road allowance TWP 114
- Alternate route section on Range Road 80 in road allowance
- Alternate route section on Range Road 83 in road allowance
- + Heavy Rail
- QTR
- TWP



Map: Winnifred Wind Power Connection Project - Newsletter Update

Date: March 2022

Page: 3 / 7

Scale: 1:15.000



(WGS_1984_UTM_Zone_12N)

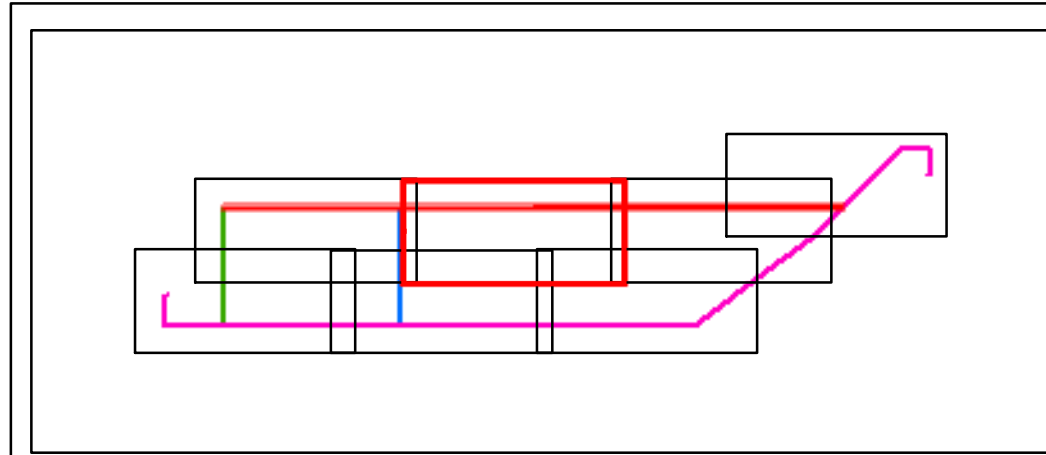
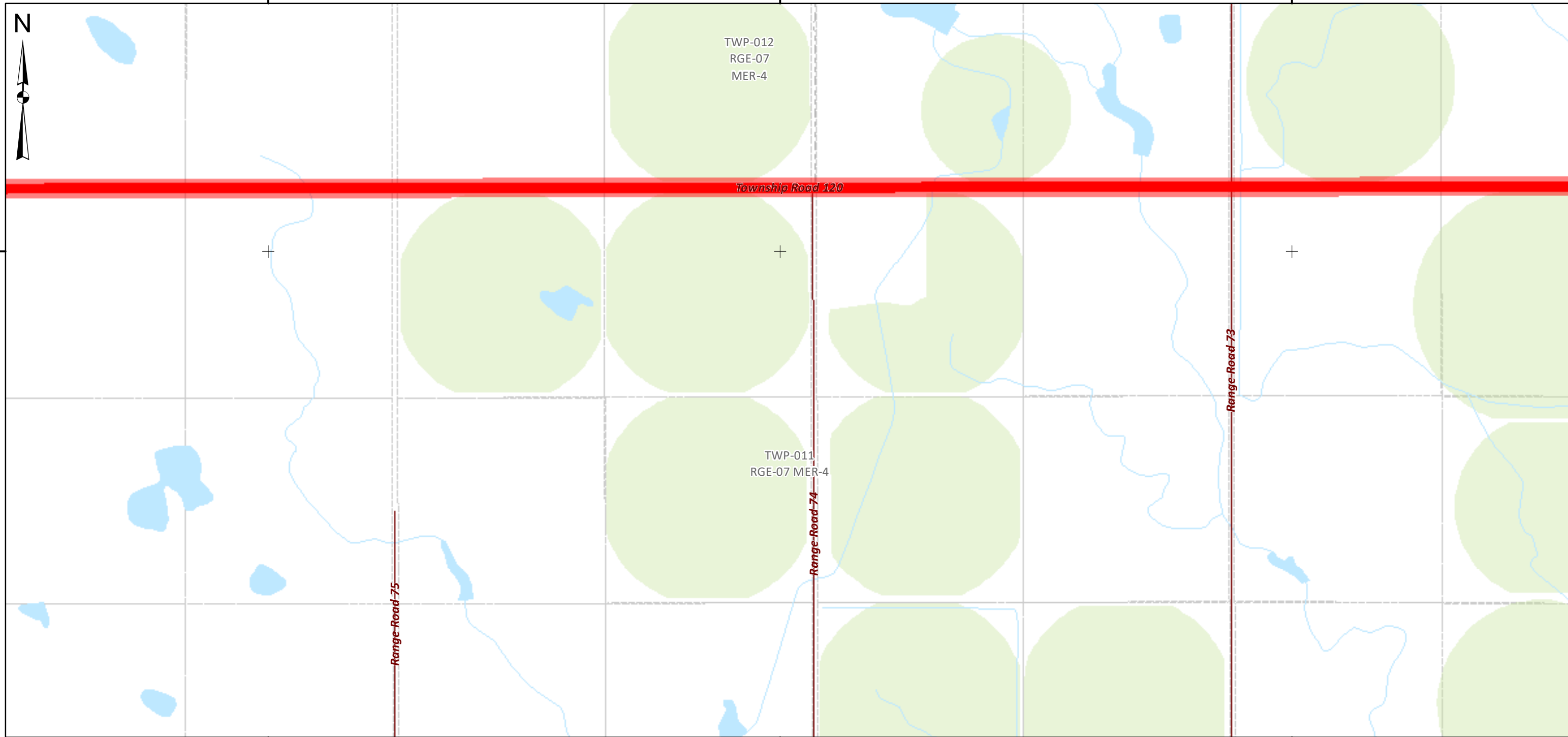
504000

506000










508000



5534000



Legend

-  Altalink Bullshead 523S Substation
-  Enerfin Holsom 1054S Substation
-  Consultation Corridor on Township Road 120
-  Initial route Proposed in Enerfin July 2021 Facility Application
-  Alternate route section on Range Road 80 in road allowance
-  Alternate route section on Range Road 83 in road allowance
-  Heavy Rail
-  QTR
-  TWP



Map: Winnifred Wind Power Connection Project - Newsletter Update

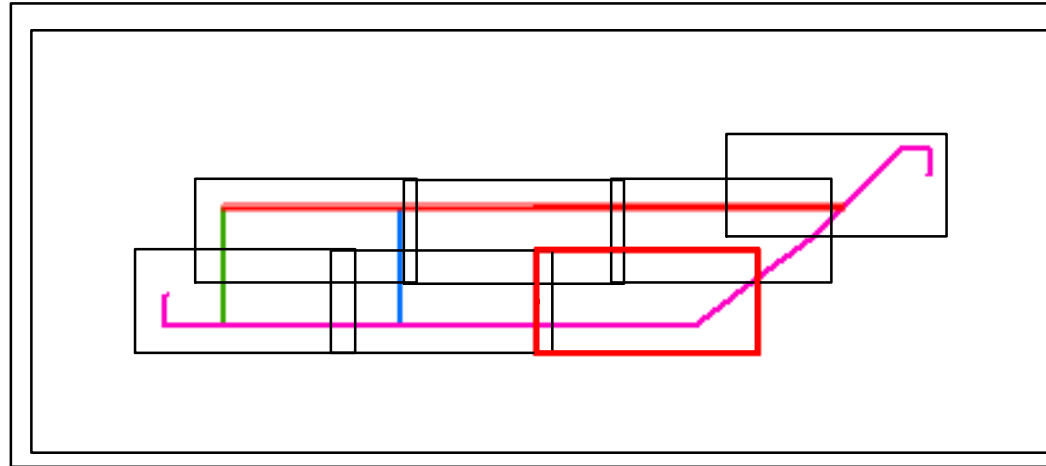
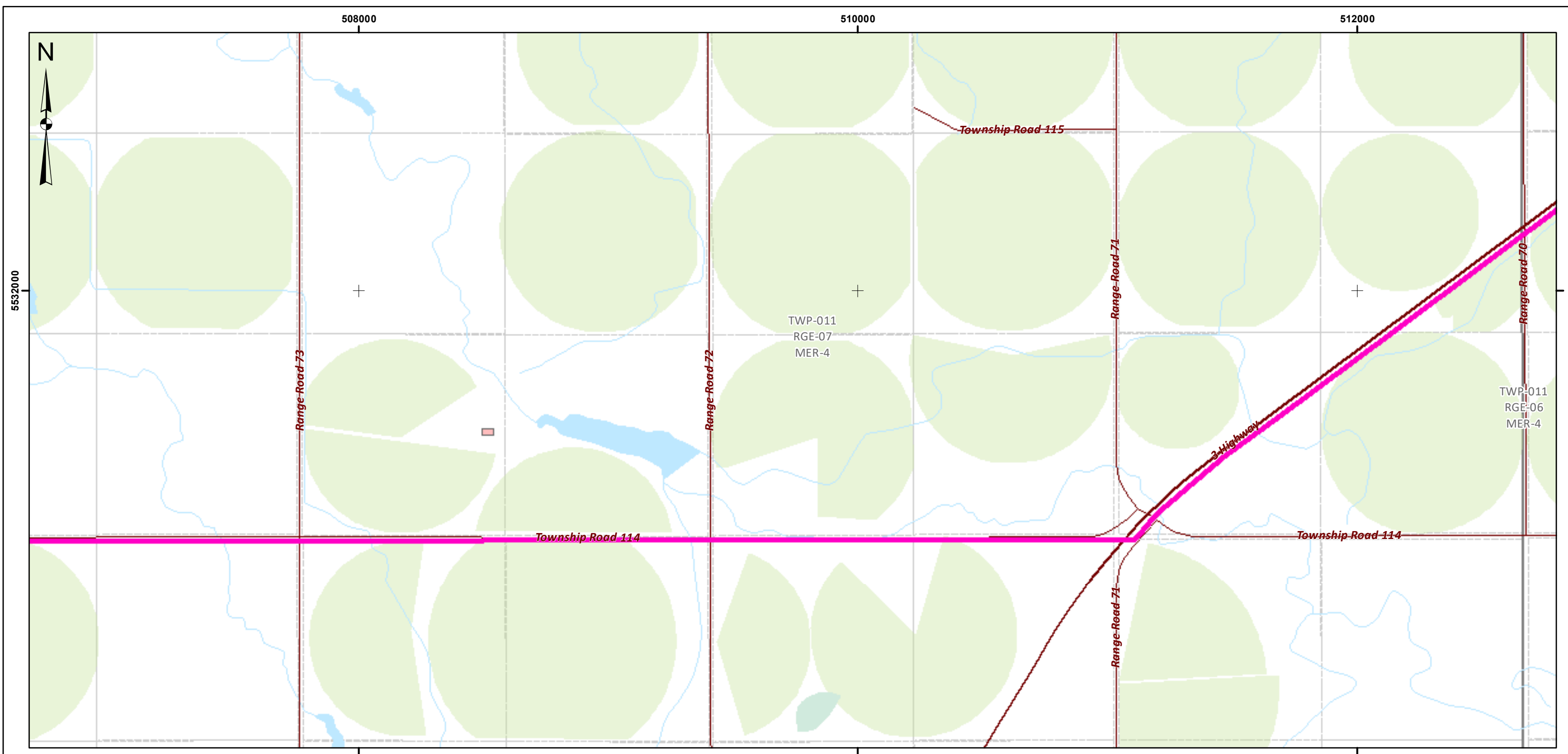
Date: March 2022

Page: 4 / 7

Scale: 1:15.000



(WGS_1984_UTM_Zone_12N)



Legend

- ★ Altalink Bullshead 523S Substation
- ★ Enerfin Holsom 1054S Substation
- Consultation Corridor on Township Road 120
- Initial Proposed route - in road allowance TWP 114 and HWY 3
- Alternate route section on Range Road 80 in road allowance
- Alternate route section on Range Road 83 in road allowance
- + Heavy Rail
- QTR
- TWP



Map: Winnifred Wind Power Connection Project - Newsletter Update

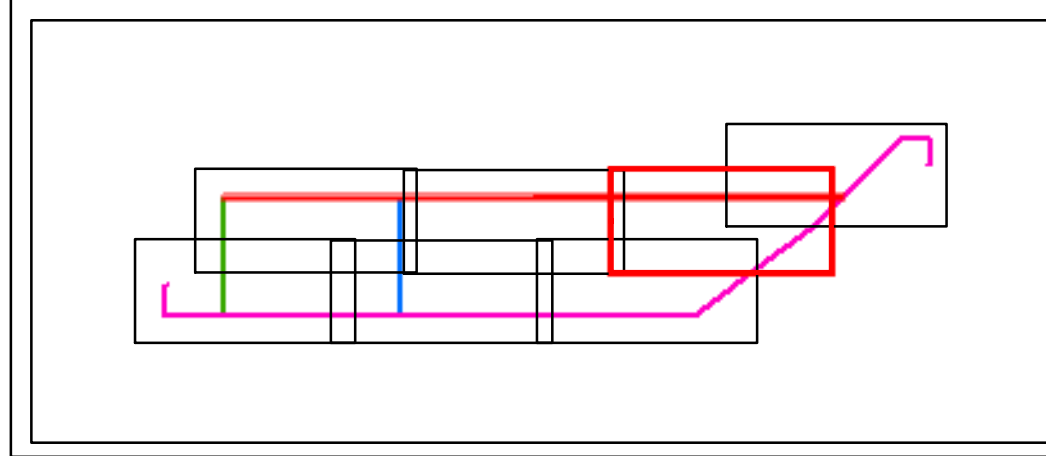
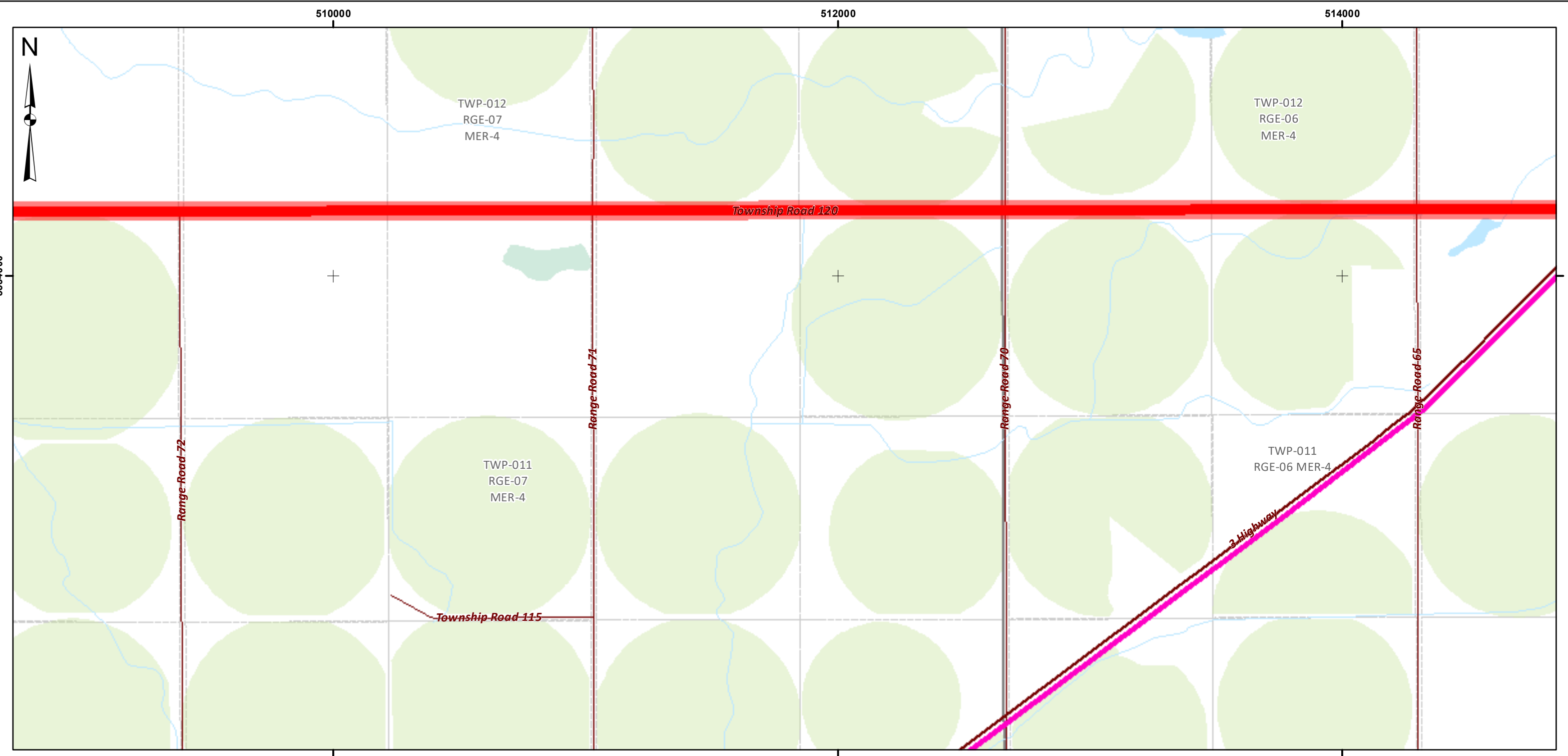
Date: Mar/2022

Page: 5 / 7

Scale: 1:15.000



(WGS_1984_UTM_Zone_12N)



Legend

- ★ Altalink Bullshead 523S Substation
- ★ Enerfin Holsom 1054S Substation
- Consultation Corridor on Township Road 120
- Initial Proposed route - in road allowance HWY 3
- Alternate route section on Range Road 80 in road allowance
- Alternate route section on Range Road 83 in road allowance
- + Heavy Rail
- QTR
- TWP



Map: Winnifred Wind Power Connection Project - Newsletter Update

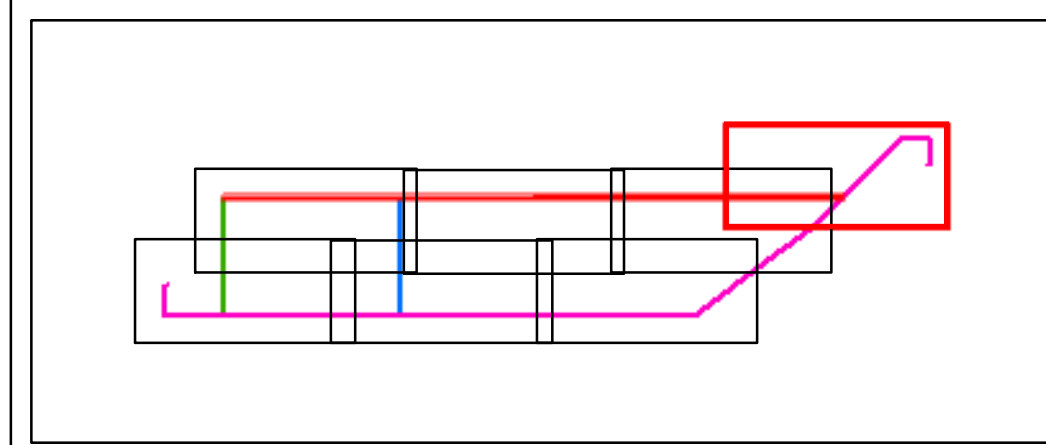
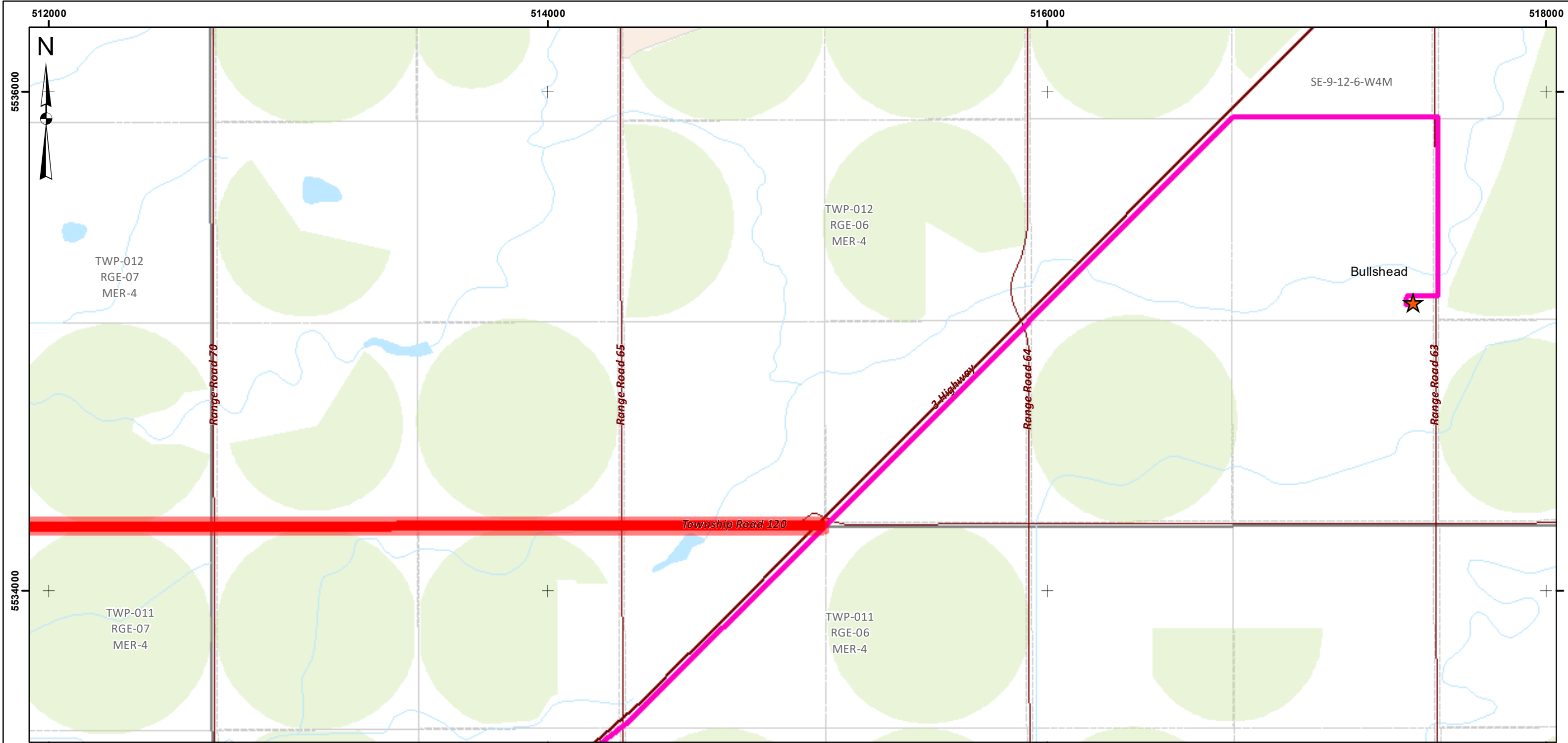
Date: March 2022

Page: 6 / 7







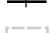


Scale: 1:15,000



(WGS_1984_UTM_Zone_12N)



Legend

-  Altalink Bullshead 523S Substation
-  Enerfin Holsom 1054S Substation
-  Consultation Corridor on Township Road 120
-  Initial Proposed route - in road allowance HWY 3 and RR 63, in private land on SE-9-12-6-W4M
-  Alternate route section on Range Road 80 in road allowance
-  Alternate route section on Range Road 83 in road allowance
-  Heavy Rail
-  QTR
-  TWP



Map: Winnifred Wind Power Connection Project - Newsletter Update

Date: March 2022

Page: 7 / 7

Scale: 1:15.000



(WGS_1984_UTM_Zone_12N)