



Enerfin – Winnifred Wind Power Connection Project

144 4 Avenue SE #1600

Calgary, AB, T2P 3N4

May 27, 2022

Dear Sir or Madam,

RE: Winnifred Wind Power Connection Project Update – Notice of Filing

Enerfin Energy Company of Canada Inc. (Enerfin) is pleased to provide an update to all stakeholders located adjacent to the proposed new 138 kV transmission line required to connect their Winnifred Wind Power Plant. The Winnifred Wind Power Connection Project (Project) located in Forty Mile County No. 08 and Cypress County routing alignment has been updated since the project mailout in March 2022. In April 2022, Enerfin requested a time extension with the Alberta Utilities Commission (AUC) to assess alternative routing options for the proposed new transmission line and committed to submit new routing information to the AUC on or before May 27, 2022. The AUC approved this extension.

Enerfin has determined through the routing analysis that the portion of the transmission line originally proposed along Township 114 be re-sited to the north side of Township 120. Enerfin has eliminated the portion of the alignment along Township 114 for consideration from the AUC.

Please see enclosed the map showing the revised preferred alignment that Enerfin has submitted to the AUC for approval today, May 27, 2022. The preferred alignment has received strong stakeholder support from landowners, agencies, and government bodies.

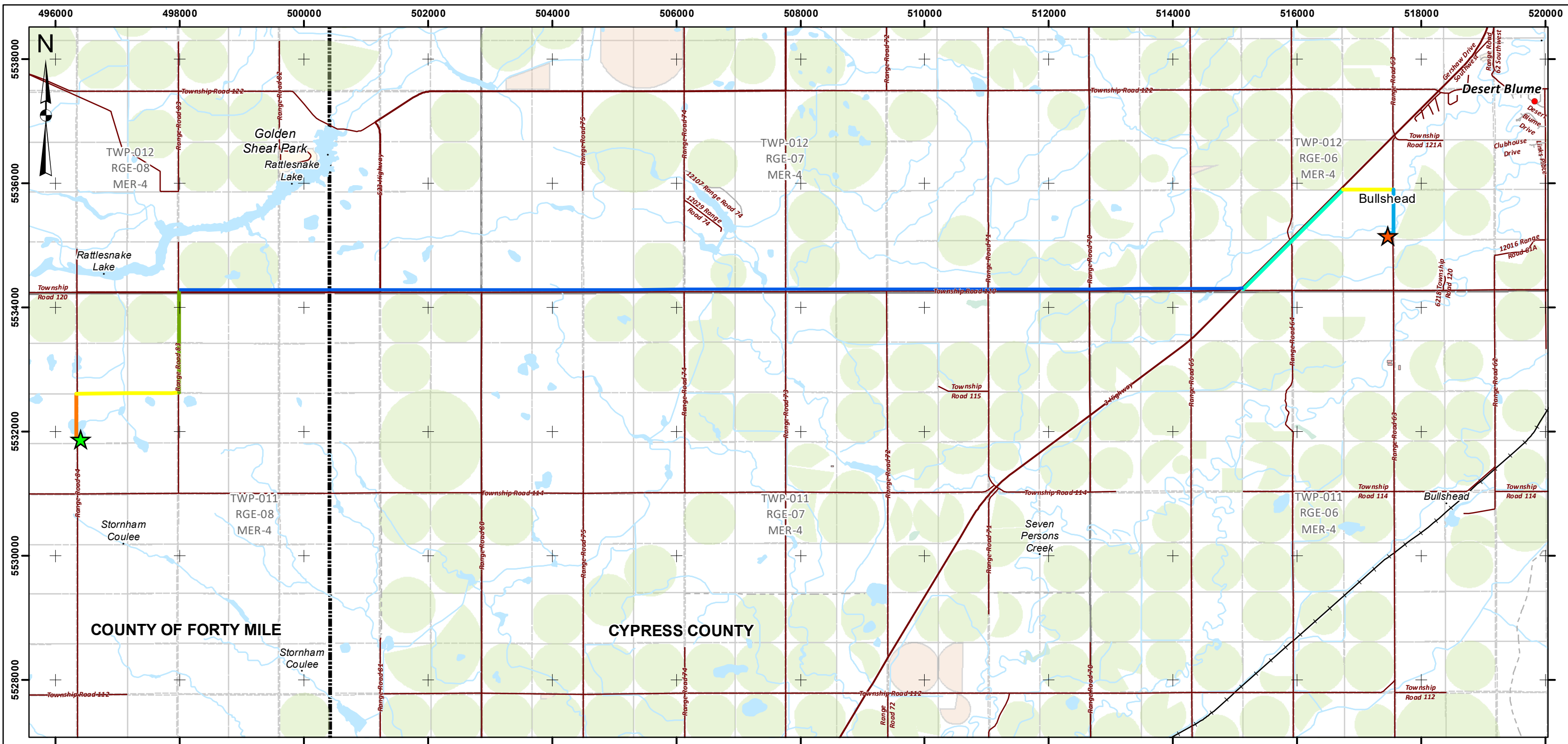
If you require any additional information or would like to discuss the new routing alternatives, please feel free to contact the Enerfin stakeholder engagement team.

Sincerely,

Winnifred Wind Power Connection Project Team

1 (833) 363-7346

www.winnifredwindproject.ca



Legend (from Holsom to Bullshead)

- 1m inside Road Allowance west side of RR84
- Private easement
- 1m inside Road Allowance east side of RR83
- 1m inside HWY 523 Road Allowance north side, then private easement 4m north of edge of TWP RD 120 Road Allowance
- Private easement
- 2m inside HWY 3 Alberta Transportation Road Allowance
- 1m inside Road Allowance east of RR63

- ★ Altalink Bullshead 523S Substation
- ★ Enerfin Holsom 1054S Substation
- + Heavy Rail
- TWP
- QTR

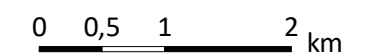


Map: Winnifred Wind Power Connection Project (Routes)

Date: MAY/2022

Page: 1/1

Scale: 1:60.000



(WGS_1984_UTM_Zone_12N)